

[principal@levin.school.nz](mailto:principal@levin.school.nz)  
Phone 368 6562



[www.levin.school.nz](http://www.levin.school.nz)  
Text 02102480530

**Levin School Values: Respect, Excellence, Attitude, Co-operation and Honesty.**

Term 1

Newsletter

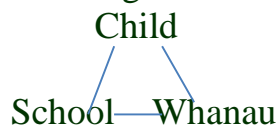
25<sup>th</sup> February 2021



### Principal's Message

Kia Ora Koutou, Talofa lava, Malo e lelei, Ni Hao, Chao & Namaste.

What an impressive turn out for our 'Levin School Whanau Fun Night'. Many thanks to everyone for making it a successful evening. This was a great way to celebrate the start of the school year and to give whanau and teachers the opportunity to meet, talk and inform positive relationships in a relaxed manner. The whole concept of the evening was to further reinforce the triangle of learning for all of our tamariki.



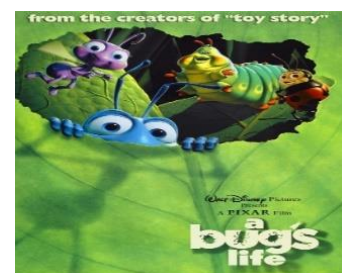
An awesome feeling of 'Community' was present with live entertainment, freshly cooked sausages, fun games, building sand castles in the sand pit, cricket, waterslide and lots of whanau enjoying themselves in the sun and shade. A special thank you for their support goes to Jonah's dad Dylan and his whanau for the music and Anita for manning the bbq.

Check out the next 2 weeks yummy lunch menus at the end of the newsletter.

Nga Mihi  
Paddy Sannazzaro

**Updating details:** A huge thanks to those children that have bought back the forms, sent home last week, asking to update details. It is important that the school has the correct information for there may be times when we need to contact parents urgently.

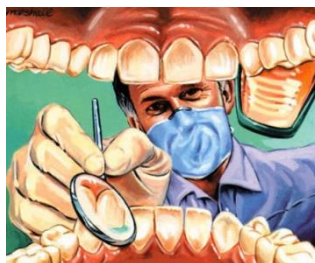
**Watch this space!** On Wednesday 10<sup>th</sup> March, the whole school will be travelling by bus to Te Manawa, Palmerston North, leaving at 9:00 am and returning by 3:00 pm. We will be visiting the Bug Exhibition. More information will follow next week.



**Home Internet Connections:** All homes currently connected through the Ministry will continue to have free internet access until December 2021.

The Ministry has provided over 45,000 student homes with free internet access as part of the COVID-19 support plan. These connections were due to start expiring this month. However, while COVID-19 is still a risk and an alert level change is possible, the Ministry want to ensure students can continue to access the internet and learn outside the classroom. If you are currently on this service, in the coming weeks you will receive a physical letter informing you of this extension.

For any other queries, contact the Learning from Home Helpdesk at **EDA2education.govt.nz** or **0800 783 744**



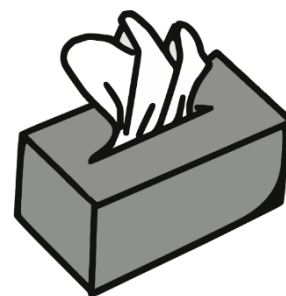
The Mobile Dental Unit will be visiting Levin School from Monday, 1st March 2021 to examine and provide preventative treatment. Preventive treatment includes cleaning, fissure sealants, x-rays and fluoride treatment, where required, for patients due for their annual check.

Students requiring further treatment, eg fillings and extractions, will be sent an information pamphlet, medical history update form and consent form. **(These will need to be signed and returned to either the Mobile or the school office before any treatment is undertaken).**

If parents have any concerns or wish to be present at their child's dental appointment, please contact us on either of the numbers below.

Regards from the Dental Team                      Phone 027 669 5117

**Tissues:** Thank you to those wonderful parents that have kindly donated tissues to school. As you can imagine with 160 students they will quickly be put to use.



**Dates to remember:**

- Friday 26<sup>th</sup> February - Junior swimming
- Wednesday 3<sup>rd</sup> March - Junior swimming
- Friday 5<sup>th</sup> March - Junior swimming
- Wednesday 10<sup>th</sup> March – Te Manawa whole school trip
- Friday 12<sup>th</sup> March – Assembly @ 2 pm in the hall
- Wednesday 17<sup>th</sup> March – BoT meeting @ 3.30 pm
- Wednesday 24<sup>th</sup> March – Epro8 challenge for Year 5/6

## Community News:

### New Zealand Police *Nga Pirinimana o Aotearoa* Parents and Caregivers

Levin police are issuing a timely reminder about the safety and legal obligations of all those parents and caregivers bringing their children to school by car.



Roads around schools both before and after school can be extremely dangerous due to traffic volume and the number of students entering or exiting the grounds.

Recently, I am aware of an issue where a person driving a car **was distracted and** as a result ran into the road patrol sign which was out to stop traffic, luckily no one was crossing the road and the child operating the sign was not hurt. I am using this incident as a chance to remind everyone that this type of accident can happen easily if we are complacent. The last thing anyone wants is for someone to be seriously hurt, so it is vital that you drive safely and pay attention to the road.

The school is trying to ensure the safety of your children at these times by operating school traffic safety teams (school patrols at crossings). To achieve this, they require your help by observing the traffic laws in relation to pedestrian crossing and driving in general.

When dropping off or picking up kids you should not be parking illegally. This includes in bus stops or anywhere with yellow lines. Police are committed to the safety of children around schools **and as a result** will be monitoring these locations at peak times.

Below is a list of offences that we will be actively policing with the help of the school:

- Parked on broken yellow line \$60 fine.
- Driver or passengers not wearing seatbelts \$150 fine.
- Failed to stop or remain stopped for a school patrol \$1000 fine.
- Passed a vehicle stopped at a pedestrian crossing \$1000 fine.
- Parked on or near a pedestrian crossing \$60 fine.

Your assistance in observing these laws is appreciated, and necessary to keep our children safe.

Yours faithfully  
Lewis Barclay  
Constable School Community Officer

**Lighthouse Club 2021:** This is FREE to ALL CHILDREN

Year 1-8 are invited to our weekly **LIGHTHOUSE CLUB** on Thursdays at 3:15—4:45 in Hinemoa House Hall in Hinemoa St and to **GAMES CLUB** in the Boxing Gym behind Hinemoa House.

We start on 4th March and the Games Club on every other Saturday from 6<sup>th</sup> March - 10:00am to 12 noon.

Lots of fun, Games, Singing, Quizzes, Bible stories, Crafts & Prizes. This is a Christian programme. Registration forms or further information is available from Hinemoa House or by ringing Pam Brooking 0275650467. (All staff are police vetted for these programmes)

**The Arts Society:** Hello parents and children.

The Arts Society in Bath Street has a special painting event on and we would like you to join in. We have received funding from the Council to paint some large boards which represent how each generation feels about living in Horowhenua.

The best 3 things about this are:

- that the event is free
- we don't want skilled painters
- and you get a free lunch.

The event is on Saturday 6<sup>th</sup> March starting at 12.30

with lunch and a chat about what to paint on the big boards. The children will do one board and the parents will do another all at the same time. It will be fun and you will have experienced artists there to help you express yourselves in paint. In April the Council will publicly display the boards for all the community to see.

Email Marilyn on [ceconfidential@gmail.com](mailto:ceconfidential@gmail.com) or Sandy on [sandybuck0@gmail.com](mailto:sandybuck0@gmail.com) if you have any questions or tell the people you already know in the society – Lyn, Neil, Vicky or Sandy - that you will be there.

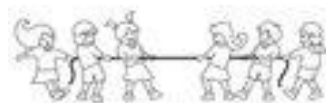


**Children's Day:** This year Children's Day is on

**Sunday 7 March 2021, 10am – 2pm** at the

Levin Adventure Park.

As with previous years, the committee's aim is to provide a fun filled day with FREE activities for our tamariki and whānau. This year's theme is Papatūānuku/ Nature.



## Christian Religious Education

Christian Religious Education (CRE) will be starting up again on Wednesday 10<sup>th</sup> March 2021 at 1 pm. The programme will run from March to November.

We do ask if children are to participate in the programme, they are committed to it and do not change their mind half way through the year.

Can you please fill in the permission slip below confirming if you wish for your child/ren to go to CRE this year?

-----

I do wish for \_\_\_\_\_ to attend CRE this year.

Parent/Caregiver signature: \_\_\_\_\_



## MONDAY

### Beef Taco

Beef bites, lettuce, rainbow slaw, mayonnaise and tomato salsa in a wholemeal tortilla wrap

Snack: Natural corn chips

V, GF, DF: Cauliflower bites  
GF: GF tortilla

## TUESDAY

### Katsu Chicken Salad

A crispy chicken tender, lettuce, rainbow slaw, cucumber, mayonnaise and katsu sauce

Snack: Cassava chips

V, GF, DF: Cauliflower schnitzel

## WEDNESDAY

### BCLT Sandwich

Bacon, cheese, lettuce, mayonnaise and tomato relish in between slices of Oatlicious bread

Snack: Fresh apple

V: Tofu slices  
GF: GF bread  
DF: No cheese

## THURSDAY

### Ham and Salad Filled Roll

Ham, lettuce, grated carrot, cheese and mayonnaise in an Oatlicious long roll

Snack: Pear

V: Peking BBQ tofu slices  
GF: GF bread  
DF: No cheese

## FRIDAY

### Chicken Satay Wrap<sup>(DF)</sup>

Shredded chicken, lettuce, grated carrot, cucumber, mayonnaise and mild no-nut satay sauce in a wholemeal wrap

Snack: Fresh apple

V: Crumbled falafel  
GF: GF tortilla

V: Vegetarian, GF: Gluten Free, DF: Dairy Free, H: Halal. Meals will be prepared to cater for children with specific allergies or cultural requirements. If you need gluten free, vegetarian or dairy free options please make the school aware two weeks in advance. Meals are prepared in a non-allergen controlled environment. If you have low tolerance towards certain allergens please notify the school immediately. Items may vary subject to supply.

## MONDAY

### Crispy Chicken Salad

Shredded chicken, lettuce, grated carrot, cucumber, crispy noodles and mayonnaise

Snack: Blueberry muffin

V: Broccoli bites  
GF: Kumara rosti  
GF/DF snack: GF/DF cookie

## TUESDAY

### Hummus Wrap<sup>(V,DF)</sup>

Hummus, lettuce, grated carrot, cucumber and ranch dressing in a wholegrain wrap

Snack: Fruit yoghurt

GF: GF tortilla  
DF snack: Orange slices

## WEDNESDAY

### Pulled Pork Taco<sup>(DF)</sup>

Pulled pork, lettuce, grated carrot, cucumber, mayonnaise and korean BBQ sauce in a wholemeal tortilla wrap

Snack: Fresh apple

V: Kumara rosti  
GF: GF wrap

## THURSDAY

### Beef & Cheese Sandwich

Roast beef, cheese, lettuce and onion relish in between slices of Oatlicious bread

Snack: Orange wedges

V: Crumbled falafel  
H: Shredded chicken  
GF: GF bread  
DF: No cheese

## FRIDAY

### Coronation Chicken Roll<sup>(DF)</sup>

Shredded chicken, garden mix, grated carrot, cucumber and aioli in an Oatlicious long roll

Snack: Pear

V: Kumara rosti  
GF: GF bread

V: Vegetarian, GF: Gluten Free, DF: Dairy Free, H: Halal. Meals will be prepared to cater for children with specific allergies or cultural requirements. If you need gluten free, vegetarian or dairy free options please make the school aware two weeks in advance. Meals are prepared in a non-allergen controlled environment. If you have low tolerance towards certain allergens please notify the school immediately. Items may vary subject to supply.